



Business Machines



WAVE WASHERS - OVERLAP TYPE (WVO)

Part Number	Operates in Bore Diam.	Clear Shaft Diam.	Operating Height	Free Height	Wire Thickness	Radial Wall / Width
3 Waves						
BM-WWO-0050	12.700	9.906	1.270	2.159	0.203	1.016
BM-WWO-0062	15.875	12.192	1.270	2.413	0.254	1.473
BM-WWO-0075	19.050	12.700	1.575	4.064	0.254	1.981
BM-WWO-0087	22.225	15.748	1.575	3.302	0.305	2.388
BM-WWO-0100	25.400	19.812	1.575	4.064	0.305	2.388
BM-WWO-0112	28.575	21.336	1.981	3.302	0.406	3.378
BM-WWO-0125	31.750	24.384	1.981	3.810	0.406	3.378
BM-WWO-0137	34.925	27.686	1.981	4.826	0.406	3.378
BM-WWO-0150	38.100	29.718	1.981	4.318	0.457	3.632
BM-WWO-0162	41.275	33.274	1.981	5.080	0.457	3.632

Light Series

B

M

P

R

O

D

U

C

T

L

I

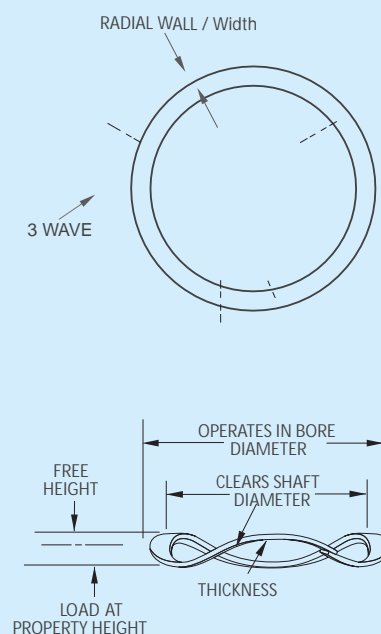
S

T



Product Dimensions

All dimensions in millimeters



WAVE WASHERS - OVERLAP TYPE (WWO)



Light Series

Part Number	Operates in Bore Diam.	Clear Shaft Diam.	Operating Height	Free Height	Wire Thickness	Radial Wall / Width
4 Waves						
BM-WWO-0175	44.450	36.576	1.981	3.556	0.457	3.632
BM-WWO-0187	47.625	39.624	1.981	3.810	0.457	3.632
BM-WWO-0200	50.800	42.672	2.362	3.556	0.610	3.810
BM-WWO-0212	53.975	45.720	2.362	3.810	0.610	3.810
BM-WWO-0225	57.150	49.022	2.362	4.318	0.610	3.810
BM-WWO-0237	60.325	50.546	2.362	4.064	0.610	4.521
BM-WWO-0250	63.500	53.848	2.362	4.318	0.610	4.521
BM-WWO-0262	66.675	56.896	2.362	4.826	0.610	4.521
BM-WWO-0275	69.850	59.436	2.769	4.318	0.762	4.775
BM-WWO-0287	73.025	62.738	2.769	4.572	0.762	4.775
BM-WWO-0300	76.200	65.786	2.769	4.826	0.762	4.775
BM-WWO-0312	79.375	68.834	2.769	5.334	0.762	4.775
BM-WWO-0325	82.550	69.850	2.769	5.080	0.762	5.918
BM-WWO-0337	85.725	72.136	2.769	5.588	0.762	5.918
BM-WWO-0350	88.900	76.200	2.769	5.842	0.762	5.918
BM-WWO-0362	92.075	79.248	2.769	6.096	0.762	5.918
BM-WWO-0375	95.250	82.550	2.769	6.604	0.762	5.918
BM-WWO-0387	98.425	85.598	2.769	7.620	0.762	5.918
5 Waves						
BM-WWO-0400	101.600	88.900	2.769	4.826	0.762	5.918
BM-WWO-0412	104.775	91.948	2.769	5.080	0.762	5.918
BM-WWO-0425	107.950	94.996	2.769	5.334	0.762	5.918
BM-WWO-0437	111.125	98.044	2.769	5.334	0.762	5.918
BM-WWO-0450	114.300	101.346	2.769	5.842	0.762	5.918
BM-WWO-0462	117.475	104.394	3.175	6.858	0.762	5.918
BM-WWO-0475	120.650	107.696	3.175	7.874	0.762	5.918
BM-WWO-0487	123.825	110.998	3.175	7.366	0.762	5.918
BM-WWO-0500	127.000	114.046	3.175	7.874	0.762	5.918
BM-WWO-0512	130.175	117.094	3.175	8.636	0.762	5.918
BM-WWO-0525	133.350	120.396	3.175	9.398	0.762	5.918
BM-WWO-0537	136.525	123.444	3.175	9.652	0.762	5.918

Stock items available in carbon steel, stainless steel and copper.



WAVE WASHERS - OVERLAP TYPE (WVO)

Part Number	Operates in Bore Diam.	Clear Shaft Diam.	Operating Height	Free Height	Wire Thickness	Radial Wall / Width
6 Waves						
BM-WWO-0550	139.700	126.746	3.175	6.350	0.762	5.918
BM-WWO-0562	142.875	129.794	3.175	6.858	0.762	5.918
BM-WWO-0575	146.050	133.096	3.175	7.112	0.762	5.918
BM-WWO-0587	149.225	136.144	3.175	7.620	0.762	5.918
BM-WWO-0600	152.400	139.446	3.175	7.620	0.762	5.918
BM-WWO-0612	155.575	142.494	3.175	7.874	0.762	5.918
BM-WWO-0625	158.750	145.542	3.175	8.636	0.762	5.918
BM-WWO-0637	161.925	148.844	3.175	8.890	0.762	5.918
BM-WWO-0650	165.100	151.892	3.175	9.906	0.762	5.918
BM-WWO-0675	171.450	158.242	3.175	10.668	0.762	5.918
BM-WWO-0700	177.800	156.464	3.962	8.128	0.813	9.525
BM-WWO-0725	184.150	163.576	3.962	8.890	0.813	9.525
BM-WWO-0750	190.500	169.926	3.962	9.144	0.813	9.525
BM-WWO-0775	196.850	176.276	3.962	9.652	0.813	9.525
BM-WWO-0800	203.200	182.626	3.962	9.906	0.813	9.525
BM-WWO-0825	209.550	188.976	3.962	10.922	0.813	9.525
7 Waves						
BM-WWO-0850	215.900	195.072	3.962	8.636	0.813	9.525
BM-WWO-0875	222.250	201.422	3.962	8.636	0.813	9.525
9 Waves						
BM-WWO-0900	228.600	207.772	3.962	7.366	0.813	9.525
BM-WWO-0950	241.300	220.472	3.962	6.096	0.813	9.525
BM-WWO-1000	254.000	232.918	3.962	7.366	0.813	9.525
BM-WWO-1050	266.700	245.618	3.962	7.874	0.813	9.525
BM-WWO-1100	279.400	258.318	3.962	8.890	0.813	9.525
BM-WWO-1150	292.100	270.764	3.962	9.144	0.813	9.525
BM-WWO-1200	304.800	283.464	3.962	11.176	0.813	9.525

Light Series

B

M

P

R

O

D

U

C

T

L

I

S

T

Stock items available in carbon steel, stainless steel and copper.

WAVE WASHERS - OVERLAP TYPE (WWO)



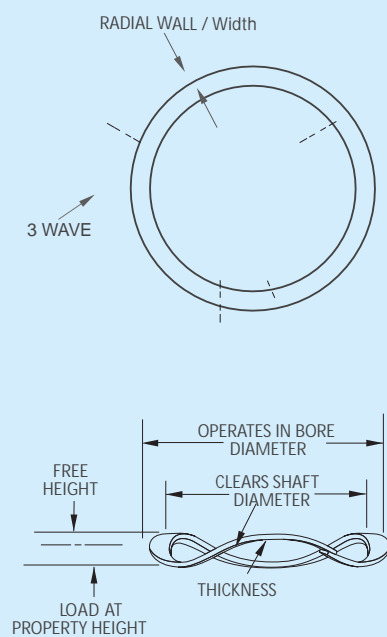
Light Series

Part Number	Operates in Bore Diam.	Clear Shaft Diam.	Operating Height	Free Height	Wire Thickness	Radial Wall / Width
10 Waves						
BM-WWO-1250	317.500	296.164	3.962	8.890	0.813	9.525
BM-WWO-1300	330.200	308.864	3.962	10.414	0.813	9.525
BM-WWO-1350	342.900	321.310	3.962	10.922	0.813	9.525
12 Waves						
BM-WWO-1400	355.600	334.010	3.962	7.620	0.813	9.525
BM-WWO-1450	368.300	346.710	3.962	8.128	0.813	9.525
BM-WWO-1500	381.000	358.902	3.962	8.890	0.813	9.525
13 Waves						
BM-WWO-1550	393.700	371.856	3.962	7.874	0.813	9.525
BM-WWO-1600	406.400	384.556	3.962	8.636	0.813	9.525

Stock items available in carbon steel, stainless steel and copper.

Product Dimensions

All dimensions in millimeters





WAVE WASHERS - FLAT SECTION (WWF) (Gap type)

Part Number	Operates in Bore Diam.	Clear Shaft Diam.	Operating Height	Free Height	Wire Thickness	Radial Wall / Width
4 Waves						
BM-WWF-0325	82.550	71.628	2.769	5.080	0.762	4.775
BM-WWF-0337	85.725	74.676	2.769	5.588	0.762	4.775
BM-WWF-0350	88.900	77.978	2.769	6.604	0.762	4.775
BM-WWF-0362	92.075	81.026	2.769	6.858	0.762	4.775
BM-WWF-0375	95.250	84.328	2.769	7.112	0.762	4.775
BM-WWF-0387	98.425	87.376	2.769	7.874	0.762	4.775

Heavy Series

B

M

P

R

O

D

U

C

T

L

I

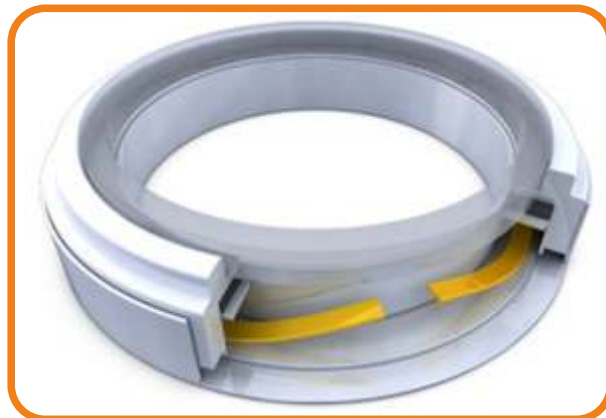
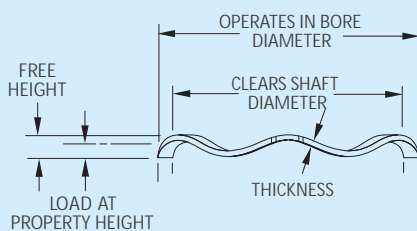
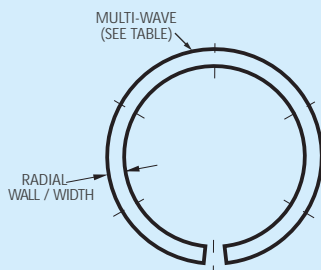
S

T

Stock items available in carbon steel, stainless steel and copper.

Product Dimensions

All dimensions in millimeters



WAVE WASHERS - FLAT SECTION (WWF) (Gap Type)



Heavy Series

Part Number	Operates in Bore Diam.	Clear Shaft Diam.	Operating Height	Free Height	Wire Thickness	Radial Wall / Width
5 Waves						
BM-WWF-0400	101.600	90.678	2.769	5.080	0.762	4.775
BM-WWF-0412	104.775	93.726	2.769	5.080	0.762	4.775
BM-WWF-0425	107.950	97.028	2.769	6.096	0.762	4.775
BM-WWF-0437	111.125	100.076	2.769	5.334	0.762	4.775
BM-WWF-0450	114.300	103.378	2.769	7.112	0.762	4.775
BM-WWF-0462	117.475	106.426	3.175	6.858	0.762	4.775
BM-WWF-0475	120.650	109.728	3.175	8.128	0.762	4.775
BM-WWF-0487	123.825	112.776	3.175	8.128	0.762	4.775
BM-WWF-0500	127.000	116.078	3.175	8.890	0.762	4.775
BM-WWF-0512	130.175	119.126	3.175	8.890	0.762	4.775
BM-WWF-0525	133.350	122.428	3.175	9.144	0.762	4.775
BM-WWF-0537	136.525	125.476	3.175	11.176	0.762	4.775
6 Waves						
BM-WWF-0550	139.700	128.778	3.175	7.112	0.762	4.775
BM-WWF-0562	142.875	131.826	3.175	7.366	0.762	4.775
BM-WWF-0575	146.050	135.128	3.175	8.636	0.762	4.775
BM-WWF-0587	149.225	138.176	3.175	8.636	0.762	4.775
BM-WWF-0600	152.400	141.478	3.175	8.636	0.762	4.775
7 Waves						
BM-WWF-0612	155.575	144.526	3.175	7.112	0.762	4.775
BM-WWF-0625	158.750	147.828	3.175	7.112	0.762	4.775
BM-WWF-0637	161.925	150.876	3.175	7.620	0.762	4.775
BM-WWF-0650	165.100	154.178	3.175	7.620	0.762	4.775
BM-WWF-0675	171.450	160.528	3.175	7.620	0.762	4.775
BM-WWF-0700	177.800	164.592	3.962	8.128	0.762	5.918
BM-WWF-0725	184.150	170.942	3.962	8.382	0.762	5.918
BM-WWF-0750	190.500	177.292	3.962	9.144	0.762	5.918
BM-WWF-0775	196.850	183.642	3.962	9.652	0.762	5.918

Stock items available in carbon steel, stainless steel and copper.



WAVE WASHERS - ROUND WIRE (WWR)

Part Number	Operates in Bore Diam.	Clear Shaft Diam.	Operating Height	Free Height	Wire Thickness
3 Waves					
BM-WWR-0050	12.700	10.363	1.321	1.575	0.787
BM-WWR-0062	15.875	13.132	1.626	1.956	0.965
BM-WWR-0075	19.050	15.951	1.930	2.337	1.143
BM-WWR-0087	22.225	18.796	2.184	2.642	1.295
BM-WWR-0100	25.400	21.717	2.413	2.946	1.422
BM-WWR-0112	28.575	24.562	2.591	3.226	1.524
BM-WWR-0125	31.750	27.457	2.794	3.505	1.651
4 Waves					
BM-WWR-0137	34.925	31.064	2.413	3.073	1.422
BM-WWR-0150	38.100	34.011	2.591	3.251	1.524
BM-WWR-0162	41.275	36.678	2.794	3.480	1.651
BM-WWR-0175	44.450	39.726	2.870	3.658	1.702
BM-WWR-0187	47.625	42.723	3.023	3.937	1.778
BM-WWR-0200	50.800	45.796	3.150	4.191	1.829
BM-WWR-0212	53.975	48.412	3.277	4.115	1.930
BM-WWR-0225	57.150	51.384	3.454	4.267	2.032
BM-WWR-0237	60.325	54.381	3.581	4.521	2.108
BM-WWR-0250	63.500	57.429	3.658	4.699	2.159
BM-WWR-0262	66.675	60.300	3.886	5.156	2.286
BM-WWR-0275	69.850	63.424	3.912	5.385	2.311
BM-WWR-0287	73.025	66.497	4.013	5.334	2.362
5 Waves					
BM-WWR-0300	76.200	70.282	3.581	4.547	2.108
BM-WWR-0312	79.375	73.101	3.658	4.674	2.159
BM-WWR-0325	82.550	75.997	3.886	4.826	2.286

Stock items available in carbon steel, stainless steel and copper.

B

M

P

R

O

D

U

C

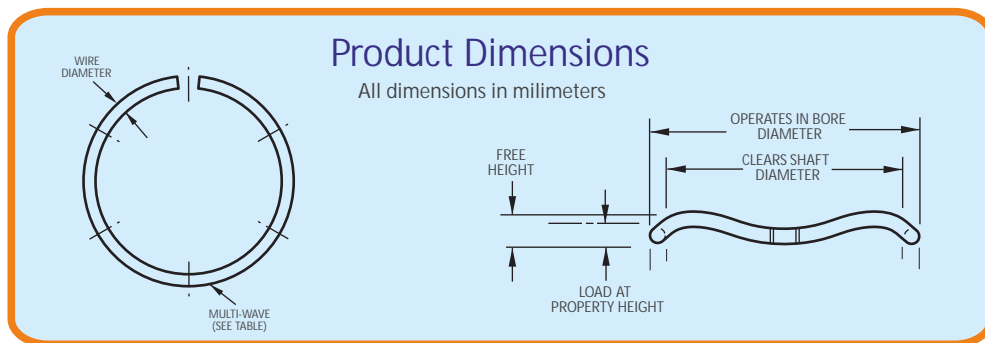
T

L

I

S

T



WAVE WASHERS - ROUND WIRE (WWR)



B

M

P

R

O

D

U

C

T

L

I

S

T

Stock items available in carbon steel, stainless steel and copper.

Part Number	Operates in Bore Diam.	Clear Shaft Diam.	Operating Height	Free Height	Wire Thickness
BM-WWR-0337	85.725	79.121	3.912	4.953	2.311
BM-WWR-0350	88.900	82.194	4.013	5.105	2.362
BM-WWR-0362	92.075	85.242	4.089	5.232	2.413
BM-WWR-0375	95.250	88.265	4.216	5.385	2.489
BM-WWR-0387	98.425	91.313	4.318	5.283	2.540
BM-WWR-0400	101.600	94.437	4.318	5.715	2.540
BM-WWR-0412	104.775	97.206	4.445	5.613	2.667
BM-WWR-0425	107.950	100.279	4.521	5.715	2.667
BM-WWR-0437	111.125	103.200	4.750	6.096	2.794
BM-WWR-0450	114.300	106.299	4.750	6.274	2.794
BM-WWR-0462	117.475	109.474	4.750	6.426	2.794
BM-WWR-0475	120.650	112.547	4.826	6.528	2.845
BM-WWR-0487	123.825	115.697	4.826	6.706	2.845
BM-WWR-0500	127.000	118.669	4.953	6.731	2.946
BM-WWR-0512	130.175	121.209	5.080	6.960	2.997
BM-WWR-0525	133.350	124.282	5.182	7.087	3.048
6 Waves					
BM-WWR-0537	136.525	127.940	4.750	6.223	2.794
BM-WWR-0550	139.700	131.115	4.750	6.375	2.794
BM-WWR-0562	142.875	134.188	4.826	6.223	2.845
BM-WWR-0575	146.050	137.312	4.826	6.375	2.845
BM-WWR-0587	149.225	140.310	5.004	6.655	2.946
BM-WWR-0600	152.400	143.358	5.080	6.807	2.997





WAVE WASHERS - FOR BEARINGS (WWB)

Part Number	Operates in Bore Diam.	Clear Shaft Diam.	Operating Height	Free Height	Wire Thickness	Radial Wall / Width
3 Waves						
BM-WWB-0063	16.00	11.28	1.57	2.29	0.250	1.980
BM-WWB-0075	19.00	14.28	1.57	3.05	0.250	1.980
BM-WWB-0087	22.00	16.46	1.57	2.79	0.300	2.390
BM-WWB-0095	24.00	18.46	1.57	3.56	0.300	2.390
BM-WWB-0102	26.00	18.22	1.98	2.54	0.410	3.380
BM-WWB-0110	28.00	20.22	1.98	2.79	0.410	3.380
BM-WWB-0118	30.00	22.22	1.98	3.30	0.410	3.380
BM-WWB-0126	32.00	24.22	1.98	3.81	0.410	3.380
BM-WWB-0138	35.00	27.22	1.98	4.57	0.410	3.380
BM-WWB-0146	37.00	28.72	1.98	3.81	0.460	3.630
BM-WWB-0158	40.00	31.72	1.98	5.08	0.460	3.630
4 Waves						
BM-WWB-0165	42.00	33.72	1.98	3.05	0.460	3.630
BM-WWB-0185	47.00	38.72	1.98	3.81	0.460	3.630
BM-WWB-0205	52.00	43.11	2.36	3.56	0.610	3.810
BM-WWB-0217	55.00	46.11	2.36	3.81	0.610	3.810
BM-WWB-0244	62.00	51.69	2.36	4.32	0.610	4.520
BM-WWB-0268	68.00	57.17	2.77	4.32	0.760	4.780
BM-WWB-0276	70.00	59.17	2.77	4.32	0.760	4.780
BM-WWB-0284	72.00	61.17	2.77	4.57	0.760	4.780
BM-WWB-0295	75.00	64.17	2.77	5.08	0.760	4.780
BM-WWB-0315	80.00	68.66	2.77	5.59	0.760	4.780
BM-WWB-0335	85.00	71.38	2.77	5.59	0.760	5.920
BM-WWB-0354	90.00	76.38	2.77	6.35	0.760	5.920
BM-WWB-0374	95.00	81.38	2.77	7.37	0.760	5.920

Available in Overlap Type & Gap Type Series

B

M

P

R

O

D

U

C

T

L

I

S

T

Stock items available in carbon steel, stainless steel and copper.



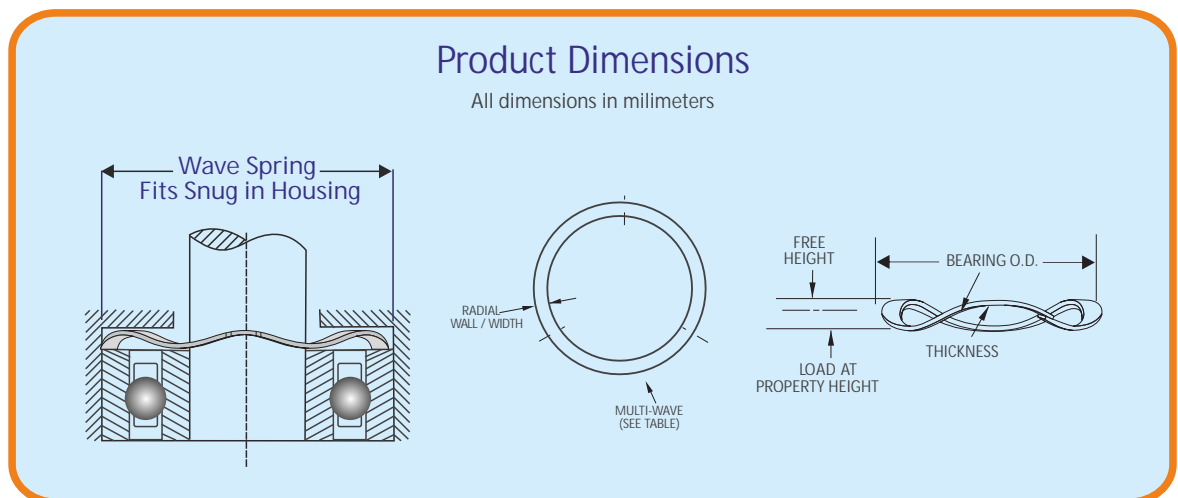
WAVE WASHERS - FOR BEARINGS (WWB)



Available in Overlap Type & Gap Type Series

Part Number	Operates in Bore Diam.	Clear Shaft Diam.	Operating Height	Free Height	Wire Thickness	Radial Wall / Width
5 Waves						
BM-WWB-0394	100	86.38	2.77	4.57	0.76	5.920
BM-WWB-0413	105	91.38	2.77	5.08	0.76	5.920
BM-WWB-0433	110	96.38	2.77	5.33	0.76	5.920
BM-WWB-0453	115	101.38	3.18	6.35	0.76	5.920
BM-WWB-0472	120	106.38	3.18	7.11	0.76	5.920
BM-WWB-0492	125	111.38	3.18	7.62	0.76	5.920
BM-WWB-0512	130	116.38	3.18	8.64	0.76	5.920
BM-WWB-0532	135	121.38	3.18	9.4	0.76	5.920
6 Waves						
BM-WWB-0551	140	126.38	3.18	6.86	0.76	5.920
BM-WWB-0571	145	131.38	3.18	7.37	0.76	5.920
BM-WWB-0591	150	136.38	3.18	7.87	0.76	5.920
BM-WWB-0630	160	146.38	3.18	9.4	0.76	5.920
BM-WWB-0650	165	151.38	3.18	10.41	0.76	5.920
BM-WWB-0669	170	156.38	3.18	11.18	0.76	5.920
BM-WWB-0689	175	154.16	3.96	8.13	0.81	9.530
BM-WWB-0709	180	159.16	3.96	8.64	0.81	9.530
BM-WWB-0728	185	164.16	3.96	9.14	0.81	9.530
BM-WWB-0748	190	169.16	3.96	9.91	0.81	9.530

Stock items available in carbon steel, stainless steel and copper.





WAVE WASHERS - FOR BEARINGS (WWB)

Part Number	Operates in Bore Diam.	Clear Shaft Diam.	Operating Height	Free Height	Wire Thickness	Radial Wall / Width
7 Waves						
BM-WWB-0787	200	179.16	3.96	7.11	0.81	9.530
BM-WWB-0807	205	184.16	3.96	7.37	0.81	9.530
BM-WWB-0827	210	189.16	3.96	7.87	0.81	9.530
BM-WWB-0847	215	194.16	3.96	8.38	0.81	9.530
BM-WWB-0866	220	199.16	3.96	8.64	0.81	9.530
8 Waves						
BM-WWB-0886	225	204.16	3.96	7.11	0.81	9.530
9 Waves						
BM-WWB-0906	230	209.16	3.96	6.1	0.81	9.530
BM-WWB-0925	235	214.16	3.96	6.35	0.81	9.530
BM-WWB-0945	240	219.16	3.96	6.35	0.81	9.530
BM-WWB-0984	250	229.16	3.96	6.86	0.81	9.530
BM-WWB-1024	260	239.16	3.96	7.37	0.81	9.530
BM-WWB-1043	265	244.16	3.96	7.62	0.81	9.530
BM-WWB-1063	270	249.16	3.96	8.13	0.81	9.530
BM-WWB-1102	280	259.16	3.96	8.64	0.81	9.530
BM-WWB-1142	290	269.16	3.96	9.4	0.81	9.530
BM-WWB-1181	300	279.16	3.96	10.41	0.81	9.530
BM-WWB-1221	310	289.16	3.96	7.11	1.07	9.530
BM-WWB-1260	320	299.16	3.96	7.62	1.07	9.530
BM-WWB-1339	340	319.16	3.96	8.64	1.07	9.530
BM-WWB-1378	350	329.16	3.96	9.4	1.07	9.530

Available in Overlap Type & Gap Type Series

B

M

P

R

O

D

U

C

T

L

I

S

T

Stock items available in carbon steel, stainless steel and copper.



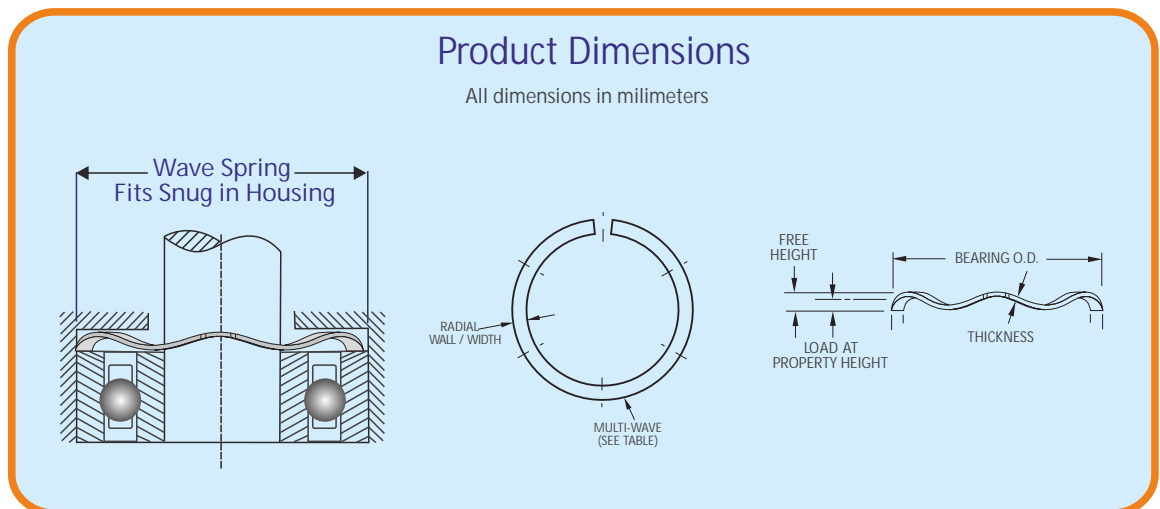


- B
- M
- P
- R
- O
- D
- U
- C
- T
- L
- I
- S
- T

Available in Overlap Type & Gap Type Series

Part Number	Operates in Bore Diam.	Clear Shaft Diam.	Operating Height	Free Height	Wire Thickness	Radial Wall / Width
10 Waves						
BM-WWB-1417	360	339.16	3.96	7.62	1.07	9.530
BM-WWB-1457	370	349.16	3.96	8.13	1.07	9.530
BM-WWB-1496	380	359.16	3.96	8.64	1.07	9.530
BM-WWB-1535	390	369.16	3.96	9.14	1.07	9.530
BM-WWB-1575	400	379.16	3.96	9.65	1.07	9.530
BM-WWB-1614	410	382.82	3.96	8.38	1.07	12.700
BM-WWB-1654	420	392.82	3.96	8.89	1.07	12.700
11 Waves						
BM-WWB-1693	430	402.82	3.96	7.62	1.07	12.700
BM-WWB-1732	440	412.82	3.96	8.13	1.07	12.700
BM-WWB-1811	460	432.82	3.96	8.89	1.07	12.700
12 Waves						
BM-WWB-1890	480	452.82	3.96	8.13	1.07	12.700
BM-WWB-1969	500	472.82	3.96	8.89	1.07	12.700
13 Waves						
BM-WWB-2126	540	512.82	3.96	8.89	1.07	12.700
14 Waves						
BM-WWB-2284	580	552.82	3.96	8.89	1.07	12.700

Stock items available in carbon steel, stainless steel and copper.





PRODUCTS

- *standard and specialized*



INDUSTRY APPLICATIONS

- *never the limit*



MATERIAL & FINISHES

- *no compromise*



QUALITY

- *that you can trust*



BM ADVANTAGES

- *life long...unlimited*

www.businessmachines.in

Business Machines

6, Chintamani Industrial Estate,
Ramtekdi Industrial Area, Hadapsar,
Pune - 411013 (Maharashtra, India)
Mobile : +91-9823096219 / 9881338762
9623625197 / 9890093910
Email: sales@businessmachines.in